



BOWSER

fuel management



Fuel monitoring starts here

Diesel and Petrol sales in South Africa total more than R800million per day. The theft of fuel is a massive industry and this valuable commodity forms part of a system that is costing companies dearly. Most businesses do not know where and when the fuel is being stolen, believing that it is drained or siphoned on the side of the road. This is not always the case, and our research shows that most stolen fuel never reaches the vehicle's tank.

Accurate Delivery

Make sure the fuel you are charged for is actually delivered



Theft Notification

Notification via SMS when fuel is being stolen



Live Monitoring

View your vehicles and bowsers live from anywhere in the world. Updated every few minutes 24/7



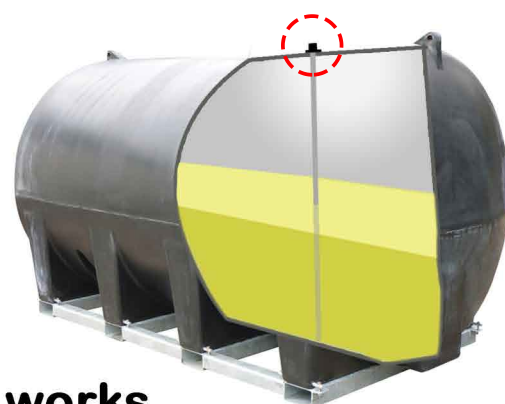
Odd shaped Tanks

Sensors can be programmed to learn the profile of odd shaped tanks



Multiple Tanks

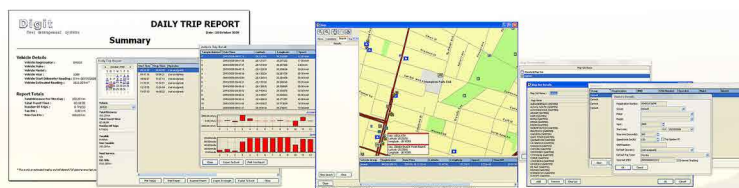
A sensor can be installed in each tank on multi tank vehicles, giving a single value of the total fuel



How it works

A fuel sensor is installed with a communication device giving you updates of your fuel levels every 4 minutes

From Delivery to Production



With fully functional fleet management software included you can manage vehicles and monitor fuel usage very accurately.

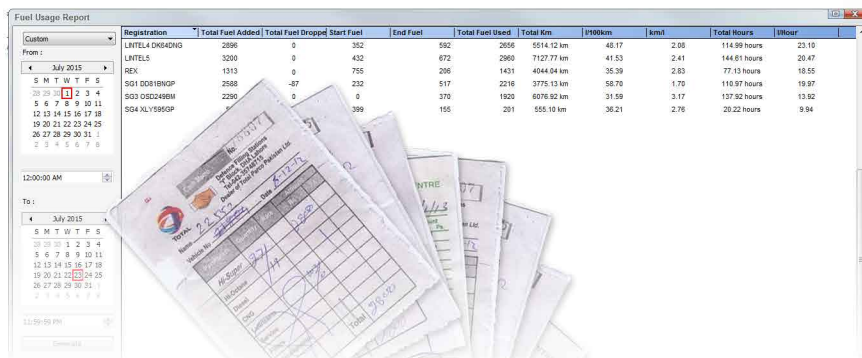




The single highest recurring expense in most business is the cost of running their vehicle fleet. A saving of only 1% may be all that is needed to move a company from a position of loss to profit. Over the past 9 years, Digit has fitted systems that have saved companies not only money, but in some cases, literally prevented them from going insolvent.

Digit vehicle tracking has developed the DFuel solution to monitor fuel levels in vehicles and storage facilities. Controlling fuel theft is about management and this valuable resource cannot be controlled without being measured. DFuel is capable of reporting fuel levels live, 24 hours a day with updates arriving at your desktop mere seconds after being measured.

DFuel management solutions were designed for vehicle installations, to keep you informed of fuel in a vehicle whilst it is travelling as well as if it stops to refuel. The latest systems work just as well in static installations and we can now handle fuel storage tanks 3m deep. Huge improvements in the design means that we enjoy better accuracy, longer service life and the ability to handle petrol as well as diesel.



Coupled with the Digit Vehicle Tracking solution, the Digit software can produce reports that include information to manage and correlate fuel slips. For the first time operators can check if the fuel they are paying for actually arrives in the truck tank. Digit is able to show all fuel adds, where they occurred, the date and time and how many litres were added. The same applies to any thefts.

Depending on the shape and size of the tank, once calibrated, accuracy is typically better than 1% error. With training and support from the Digit team, we will give you the tools to understand this technology so that it becomes the most valuable tool in your expense control.



The Digit team is willing to walk you through the process to understand what we can do, to get you back in control. DFuel is designed to save you more money than it costs, so your profitability climbs, your efficiency improves and your business can grow.



Digit Vehicle tracking

www.digitwesterncape.co.za